

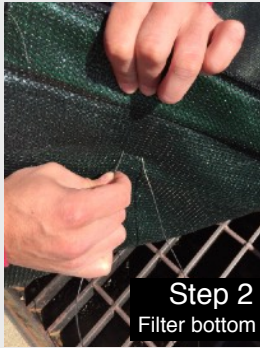
Above Ground Grated Filter (AGG2)

The **AGG 2 Filter** is useful in drain inlet protection when an under-grate filter, such as the YellowJacket or Hornet's Nest filter, is not feasible. Ideal for combo drain inlets and surface only drain inlets. Built into each unit is an overflow portal to allow faster flow-thru during heavy storm events. The **AGG 2 Filter** can either be held in place with gravel bags or the preferred method of attaching unit to the grate with heavy duty wire.



Step 1
Filter bottom

Attach wire to grate.



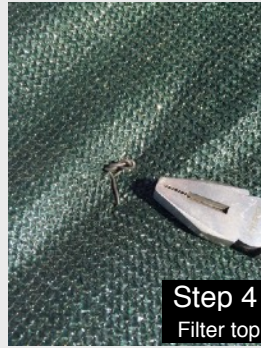
Step 2
Filter bottom

Feed wire through filter.



Step 3
Filter top

Twist wire and cut.



Step 4
Filter top

Pinch wire down.



Simple & quick maintenance



Heavy-duty installation tie wire included with each unit.

Quick Look

- **Outer Material** High density polyethylene - Poly thread (4) lock stitching
- **Filtering Media** High strength woven geotextile - Aspen wood excelsior
- **UV Rating** 85% with 364° flammability point
- **Flow Rate** 190 gpm (gallons per minute)
- **Dimensions** 40" x 27" - Custom sizing available

Specifications

PROPERTY	TEST METHOD	DATA
Mechanical		
Break Strength (Grab)	ASTM D 5034	Warp: 89 lbs - Fill 123 lbs
Break Elongation (Grab)		Warp: 59% - Fill 64%
Tear Strength	ASTM D 5587	Warp: 44 lbs - Fill 45 lbs
Burst Strength	ASTM D 3786	193 psi
Trapezoidal Tear	ASTM D 4533	80 lbs
Endurance		
UV Resistance	ASTM D 4355	85.00%
Hydraulics/Filtration		
Flow Rate	ASTM D 4491	~190 gpm
Physical		
Composition	N/A	Polyethylene 95% Pigment 3% Misc. Additives 2% (Antioxidants, UV Stabilizers)
Weight	ASTM D 3376	4.25 oz/sq-yd
Dispose of unit in accordance with applicable Federal, state and local environmental laws and regulations. The user is solely responsible for the compliance with maintenance and disposal laws and regulations. The manufacturer or seller assumes no responsibility for proper or improper maintenance or disposal.		

